



AZIMUT TRIDECK 38 METRI / BUILT 2021 - MODEL 2022 / € 14,900,000 EX VAT



- The Yacht -



- The Yacht -



- The Yacht -



- The Yacht -



- The Yacht -



- Bow -



- Bow -



- Bow Jacuzzi -



- Main Deck -



- Beach Area -



- Sundeck -



- Sundeck -



- Upper Deck -



- Upper Deck -



- Sky Lounge Upper Deck -



- Sky Lounge Upper Deck -



- Sky Lounge Upper Deck -



- Helm Station -



- Helm Station -



- Saloon -



- Saloon -



- Saloon -



- Saloon -



- Saloon -



- Master Cabin -



- Master Cabin -



- Master Cabin -



- Master Cabin Bathroom -



- Vip Cabin Upper Deck -



- Vip Cabin Upper Deck -



- Vip Cabin Upper Deck Bathroom -



- Guest Lobby -



- Guest Lobby -



- Guest Cabin -



- Guest Cabin -



- Guest Cabin Bathroom -



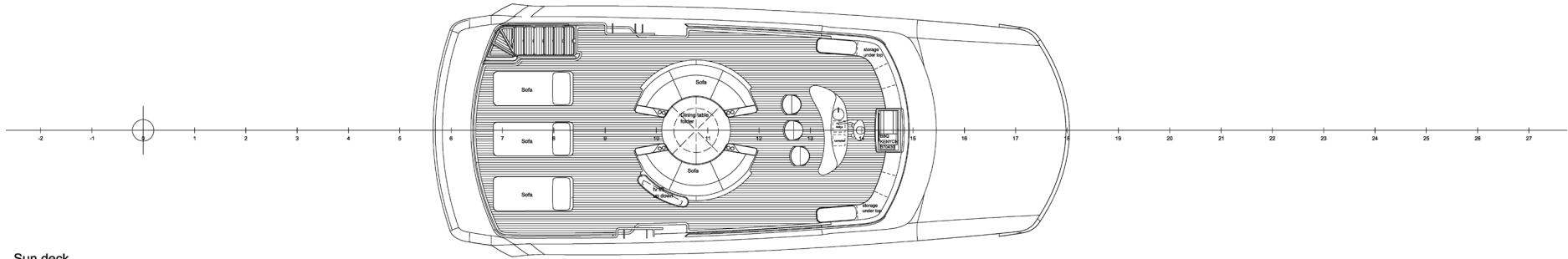
- Guest Cabin Bathroom -



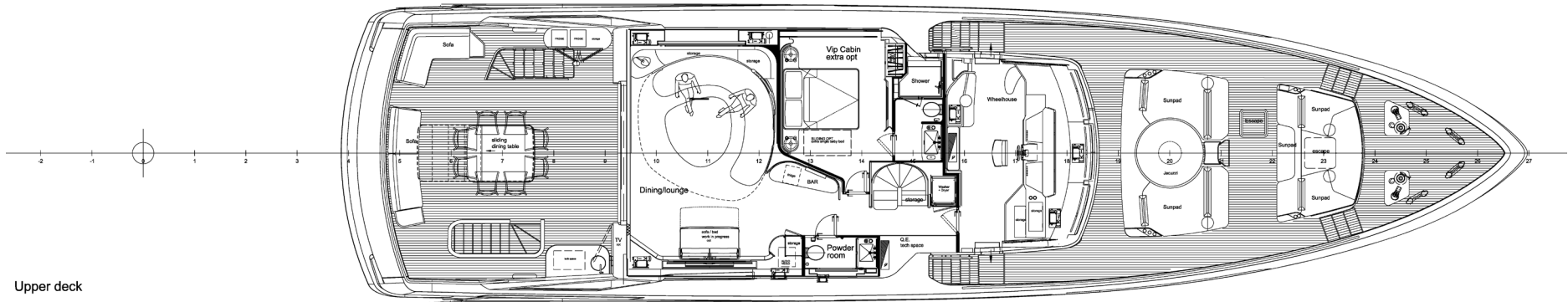
- Guest Cabin Bathroom -



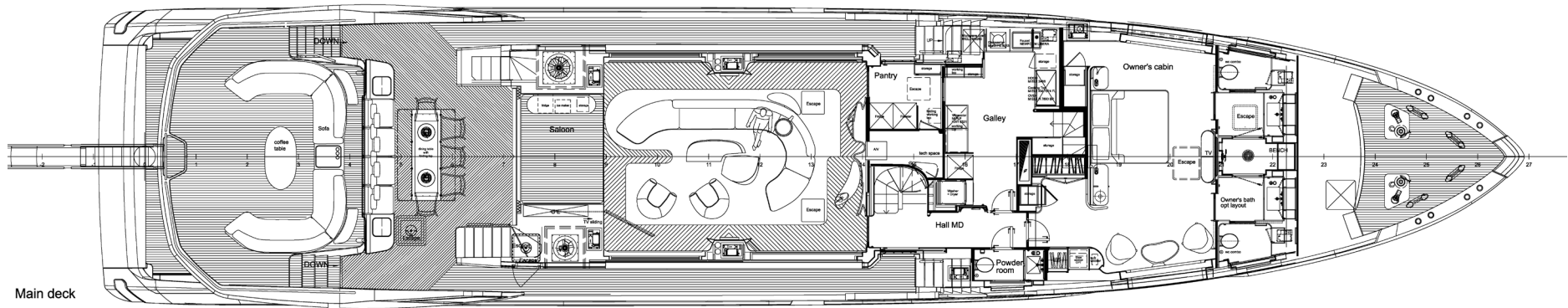
- Layout -



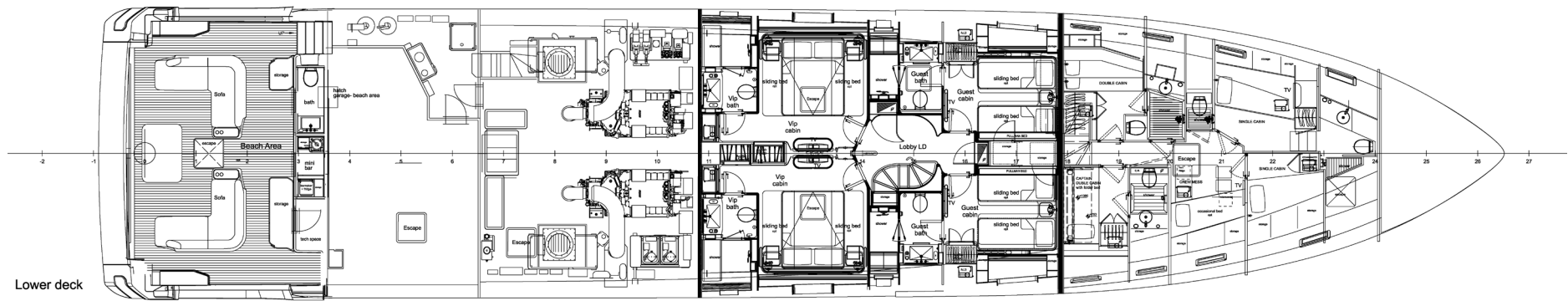
Sun deck



Upper deck



Main deck



Lower deck

- **LENGTH OVERALL: 38.22 M**
- **BEAM: 7.98 M**
- **DRAFT: 2.05 M**
- **GT: 300**
- **CABINS: 6 + CREW AREA**
- **ENGINES: 2 x MTU 2.600 HP**
- **FUEL: 22.600 L**
- **WATER: 4000 L**

GENERAL

- Integrated autopilot system with stabilizers
- Two separated water makers with total capacity up to 500 lt. (2x250 lt/h)
- Remote control alarms panel in crew mess
- Trash disposal + 3 way valve (over board)
- Automatic electric door in the salon (main deck)
- Automatic electric door in the salon (upper deck)
- Wing station

- Hauling and launching system for tender and jet ski
- Additional soundproof on main deck saloon floor
- Additional soundproof insulation in master cabin – floors and walls
- Additional soundproof insulation in lower deck – subdivision bulkhead
- Two water heaters with minimum capacity of 400 lt
- Handrails with steel-glass mix, provide glass on aft terrace. Pulpits main deck aft and upper deck remain in steel
- Flagpole
- 1 Automatic reel for shore power cable (Cantalupi)
- Two additional bollards in the middle of the boat
- Two additional bollards in the beach area
- Chain 16mm/150m in lieu of standard 14mm/147m
- Additional upgrade with Stud link
- Dimmerable lights in wheelhouse, stairs
- Main Switch to turn off all the lights in each cabin and throughout the boat
- Search light ACR dual beam (in lieu of Jabsco)

EXTERIOR

- Fenders size F11
- Painted Hull and Gunwale (metallic) and transom
- Painted Hard top and rollbar
- White hardtop

Upper Deck

- Teak flooring on all flybridge
- Glass underneath portside and starboard side stair handrail
- 6 FLEXA Lights, 3 on each side next to the gangway
- Openable table in upper deck external area (for 12 people)
- Upgraded Table + seating area on aft fly

Sundeck

- Teak flooring on all sundeck
- Sundeck cover (4 carbon poles without side closure)
- Layout: "Dance" version. Round table and settee and placement as per GA
- Aft Sundeck furniture
- 4 Hi-Low stools, comfortable ones, in front of the bar
- Add Awning with two poles for bow area of sundeck (from hard top)

Bow Area

- Bow Area Shade with Carbon Poles
- Jacuzzi and sunbeds layout in the fwd bow area as Salvagni proposal
- Fresh water outlet on bow
- Removable Backrest on sun pads

Aft Cockpit

- Cockpit with dining version
- Cockpit Shade with carbon pole (raised cockpit area)
- Aft terrace furniture as Salvagni proposal

Beach Area

- Shower in beach area (FONTEALTA MIX AS 60)
- Loose Furniture in the beach area
- Door in the beach area to access to the garage
- Toilet in Beach area with air extractor
- Folding top on stbd beach area between the twd cabinet and side opening

INTERIOR

- Salvagni lamps set
- Electric Curtains on main deck (Master Cabin and Saloon)
- Curtains with total black backout rolls

Flooring

- Floorings as per Salvagni selection

Marbles

- Marbles as per Salvagni selection

Saloon & Dining

- Furniture as per Salvagni rendering on fore-saloon

Upper Deck

- Lounge sofa in upper deck
- Sliding "drawer" bed under the main deck in the Upper Deck VIP Cabin
- Additional Sofa Bed on right side in lieu of standard

Pantry

- folding top in the galley in front of the technical area accessory main deck

Wheelhouse

- Extractable bed aft wheelhouse sofa
- Tabletop to place captain's laptop
- Sofa in helm station to be 140 cm, to have at least 130 depth

Master Cabin

- Safe in the owner's cabin
- Courtesy light under the bed
- Add a show rack in the starboard wardrobe

Master Head

- WC with integrated bidet function for master bathroom (similar to Toto)
- Master Head layout as per Azimut proposal (similar to the 35metri layout)

INTERIOR

Guest cabins

- Pullman bed guest cabin right
- Pullman bed guest cabin left
- VIP cabins to be with Sliding Double Beds
- Bow guest cabin with sliding Double Beds

Crew Quarters

- Convertible crew mess (for bed use)
- Revision of crew layout with increase in Captain's bed
- Crew Area, starboard side aft cabin to be Capt's cabin: upper bed to be folding, add TV 24'', add control panel and panel to see cameras
- Crew mess include: washbasin, microwave, TV, fridge
- Kitchen crew layout modification: moving washing machine and dryer from crew area to kitchen area
- WC and shower in lieu of fridge and storage in crew area

ELECTRICAL SYSTEM

- 4 Popup lights in the bow lounge
- Dimmers for exterior lights and interiors with inside light to show if light is open or closed
- 14 underwater lights all around the boat
- N.3 lights (each side) next to the gangway facing aft for morning purpose

APPLIANCES

- Professional appliances (washing machine and dryer)
- Salon bar cabinet fridge/freezer + storage (no sink)
- Wine cooler
- Fridge + Icemaker in sundeck cabinet
- N.2 fridge + freezer in the kitchen
- Refrigerator and Icemaker on upper deck
- Courtesy service crew call
- Add Icemaker in upper deck

ELECTRONICS & NAVIGATION

- Navigation Package
- AIS
- N.2 cameras for mooring purpose
- Additional 4 x 360 degrees cameras (engine room, garage, main deck cockpit, 1 on each side winx, 1 on the mast)
- Smart Boat Package (provide remote control of lights, curtains and possibility to having the remote control on smartphone. Possibility to having remote control panels in salon and cabins)
- 4G receiver and Wi-Fi antenna
- Wind Station
- Additional VHF in crew area

AUDIO – VIDEO

- Audio / Video Platinum package

All speeds, measurements, capacities, consumptions, etc. may be approximate or estimated. Specifications provided for information only. Data was obtained from sources believed to be reliable and is not guaranteed by owner or brokers. Buyer assumes the responsibility to ascertain the correctness of all data contained herein and otherwise provided and must instruct his agent and surveyors to confirm all details for accuracy prior to purchase. Subject to prior sale, price and inventory change, or withdrawal from market without notice.

Disclaimer



For more information please contact: Niso Gado
+972-50-7644438 | niso@azimutyachts.co.il | www.azimutyachts.co.il